



pop! play

playhouse

1973

Erith

**This is a theatre at Erith, Kent, on the outskirts of London. Called the Playhouse, it's like most theatres: it's a place of fantasy, spectacle, drama, comedy, music, dancing, singing – all that goes to make up that magic word entertainment.**

**The difference between the Playhouse and other theatres is that it is non-professional. In other words, no-one is paid for what they do on, in front of, or behind its stage.**

**The Playhouse exists because of love for the live theatre – a love shared not only by those who take part, but also by those who come to watch.**





playhouse

November, 1973 - Almost there!



## Once upon a time...

it was a cinema. Rudolph Valentino lived and loved on the screen painted on the wall at the end where the stage now stands; the Keystone Cops exhausted the fingers of the lady who played the piano with neck craned to follow the action; there was Charlie Chaplin, Laurel and Hardy, Buster Keaton, John Barrymore, Lon Chaney, Mary Pickford, and the rest.



Then came the talkies, and then came the Second World War. The community was still served by the cinema, but in an intensely practical way. It was a repository for the furniture of some of Erith's blitzed families.

High Street, Erith, 1905. At the top of the hill is the building which became the Playhouse.

And all this time there was no theatre in Erith.

But, years pass and times change and what was just another cinema became Erith's first and only live theatre.



*The theatre, 1952.*

It began as the dream of a few, but their enthusiasm was infectious and soon there were many with the same idea. They were the Erith Theatre Guild. The sympathetic members of Erith town council assigned to the Guild the lease of the decaying picture palace. Then came the plans and pickaxes, shovels and sweat, tears and triumph, and . . .



*The then Mayor of Erith, Alderman John Powrie, Dame Irene Vanbrugh, who opened the theatre, and the first chairman, Harry Clayton.*

**...the opening night.**

1949  
YELLOW SANDS  
SEE HOW THEY RUN  
PINK STRING AND SEALING WAX  
BLUE GOOSE  
THE LIGHT OF HEART  
GEORGE WASHINGTON SLEPT HERE  
DICK WHITTINGTON

1950  
LONDON WALL  
ARSENIC AND OLD LACE  
DUET FOR TWO HANDS  
FLY AWAY PETER  
THE CHAMELEON  
BALLET DIVERTISSEMENTS  
SALOON BAR  
JANE STEPS OUT  
IOLANTHE  
SHE PASSED THROUGH LORRAINE  
REVUE - NUTS IN MAY  
MISSISSIPPI RAINBOW  
TELL ME THE TRUTH  
AN INSPECTOR CALLS  
THE TINDER BOX  
REVUE - NUTS AND CRACKERS  
THE WOMEN HAVE THEIR WAY  
THIS WAS A WOMAN  
NOAH  
HUSBANDS ARE A PROBLEM  
LITTLE LAMBS EAT IVY  
THUNDER ROCK  
BABES IN THE WOOD

1951  
ELUSIVE QUEST  
FOOLS RUSH IN  
LOVE IN A MIST  
THE SHINING HOUR  
THE GONDOLIERS  
BALLET FOR YOU  
WISE TOMORROW  
ON MONDAY NEXT  
THE CHILTERN HUNDREDS  
IN GOOD KING CHARLES' GOLDEN DAYS  
DANGEROUS CORNER  
REVUE - WIT'S END  
MUSIC HALL  
MASTER OF ARTS  
HIGH TEMPERATURE  
REBECCA  
IS YOUR HONEYMOON REALLY  
NECESSARY?  
MIRACLES DON'T HAPPEN  
THE MAGISTRATE  
PEOPLE AT SEA  
CINDERELLA

1952  
HAPPIEST DAYS OF YOUR LIFE  
THE MIKADO  
BRIGHT SHADOW  
THE MAN WHO CAME TO DINNER  
THE PARAGON  
ARE YOU A MASON?  
NIGHT WAS OUR FRIEND  
THE UPSTARTS REVUE  
RUMPELSTILTSKIN  
TRESPASS  
JOURNEY'S END  
GHOSTS  
AUTUMN REVUE  
YOUNG WIVES TALE  
ALADDIN

1953  
HEDDA GABLER  
REVUE - TWO OVER THE EIGHT  
THE THREE MONKEYS  
DANDY DICK  
ONE WILD OAT  
CORONATION REVUE  
MIDSUMMER NIGHT'S DREAM  
THE HOLLOW  
PICK-UP GIRL  
BEHIND THE MASK  
GRAND NATIONAL NIGHT

1954  
SLEEPING BEAUTY  
REVUE - WE'RE ALL IN IT  
COUNT YOUR BLESSINGS  
THE OLD LADIES  
GOLDEN RAIN  
HAY FEVER  
OUR TOWN  
WILL ANY GENTLEMAN?  
QUEEN ELIZABETH  
REVUE - UP OUR SLEEVE  
MOUNTAIN AIR  
BREACH OF MARRIAGE  
HERE WE COME GATHERING  
POWER WITHOUT GLORY  
TO DOROTHY A SON  
JACK AND THE BEANSTALK

1955  
NIGHT MUST FALL  
THE HAPPY MARRIAGE  
THE POLTERGEIST  
GASLIGHT GAETIES  
CAPTAIN CARVALLO  
REVUE - HEAVENS ABOVE  
MIRANDA  
A MURDER HAS BEEN ARRANGED  
LAURA  
DIAL "M" FOR MURDER  
FOR BETTER, FOR WORSE  
THE LIVING ROOM  
THE LOVE OF FOUR COLONELS  
CLUTTERBUCK  
THE DEEP BLUE SEA

1956  
DICK WHITTINGTON  
SATELLITE STORY  
IT DEPENDS WHAT YOU MEAN  
OUTWARD BOUND  
THE LITTLE HUT  
H.M.S. PINAFORE & TRIAL BY JURY  
LAUGHTER IN THE DARK  
THE DRUNKARD  
SEE HOW THEY RUN  
REVUE - WE'VE GOT IT OFF PAT  
THE FOOLISH GENTLEWOMAN  
SEAGULLS OVER SORRENTO  
GASLIGHT  
REVUE - AUTUMN COCKTAIL  
PYGMALION  
THE HOLLY AND THE IVY  
YOU CAN'T TAKE IT WITH YOU  
A QUESTION OF FACT  
CINDERELLA

1957  
THE GIRL WHO COULDN'T QUITE  
THE SAME SKY  
HOBSON'S CHOICE  
BLACK LIMELIGHT  
THE GONDOLIERS  
THE VIGIL  
FOR PETE'S SAKE  
SOMEONE WAITING  
ARSENIC AND OLD LACE  
I AM A CAMERA  
RELUCTANT HEROES  
MURDER MISTAKEN  
JOHNNY BELINDA  
BLITHE SPIRIT  
SWEENEY TODD  
the Demon Barber of Fleet Street  
A MAN ABOUT THE HOUSE  
HARVEY  
ALADDIN

1958  
MORNING DEPARTURE  
BESIDE THE SEASIDE  
MADAM TIC-TAC  
IOLANTHE  
THE IMPORTANCE OF BEING EARNEST  
ON MONDAY NEXT  
SERIOUS CHARGE  
MRS. GIBBONS' BOYS  
OVER THE HILLS AND FAR AWAY

MY THREE ANGELS  
THE HOUSE BY THE LAKE  
ROPE  
DRACULA  
TABITHA  
ALL MY SONS  
ALI BABA AND THE FORTY THIEVES

1959  
MR. KETTLE AND MRS. MOON  
THEY WALK ALONE  
WALTZ OF THE TOREADORS  
LOOK BACK IN ANGER  
THE SORCERER  
SAILOR BEWARE!  
THE GLASS MENAGERIE  
REVUE - AFTER THE LORD MAYOR'S  
SHOW  
TEAHOUSE OF THE AUGUST MOON  
SOMETHING TO HIDE  
ROOKERY NOOK  
THE SHOP AT SLY CORNER  
THE MAN IN GREY  
DEAR DELINQUENT  
EPITAPH FOR GEORGE DILLON

1960  
BABES IN THE WOOD  
DRY ROT  
THE WHOLE TRUTH  
WOMEN OF TWILIGHT  
THE LONG AND THE SHORT AND THE  
TALL  
PIRATES OF PENZANCE  
SLEEPING PARTNERSHIP  
A VIEW FROM THE BRIDGE  
MADAME LOUISE  
EXPRESSO BONGO  
HOT SUMMER NIGHT  
BOOK OF THE MONTH  
SUMMER OF THE SEVENTEENTH DOLL  
THIS WAS A WOMAN  
SATURDAY NIGHT AT THE CROWN  
THE WINSLOW BOY

1961  
JACK AND THE BEANSTALK  
AS LONG AS THEY'RE HAPPY  
HEAVEN AND CHARING CROSS  
MACADAM AND EVE  
THE YEOMEN OF THE GUARD  
STRANGER IN THE TEA  
THE OFFSHORE ISLAND  
REVUE - IT STARTS AT EIGHT  
THE BOY FRIEND  
A CLEAN KILL  
THE RAPE OF THE BELT  
FIVE FINGER EXERCISE  
SIMON AND LAURA  
THE ENTERTAINER  
MOTHER GOOSE

1962  
THE GONDOLIERS  
NAKED ISLAND  
THE UNEXPECTED GUEST  
ROOTS  
THE WOODCARVER  
THE BRIDE AND THE BACHELOR  
THE SEASHELL  
THE BOY FRIEND (Repeat)  
THE HOSTAGE  
MATILDA SHOUTED FIRE  
FLOWERING CHERRY  
BILLY LIAR  
CLAUDIA  
THE BASTARD COUNTRY

1963  
CINDERELLA  
JANE EYRE  
WATCH IT, SAILOR!  
THE MIKADO  
THE WRONG SIDE OF THE PARK  
THE CAZEBO  
A TASTE OF HONEY  
SALAD DAYS

HOT ICE  
MURDER WITHOUT CRIME  
THE MIRACLE WORKER  
THE AMOROUS PRAWN  
DEATH AND ALL THAT JAZZ  
BUS STOP

1964  
DICK WHITTINGTON  
ROCK-A-BYE, SAILOR!  
PHOTO FINISH  
CRITIC'S CHOICE  
PATIENCE  
A DOLL'S HOUSE  
THE BRIDES OF MARCH  
A LETTER FROM THE GENERAL  
CHIPS WITH EVERYTHING  
BELLE or the Ballad of Dr. Crippen  
COME BLOW YOUR HORN  
A STREETCAR NAMED DESIRE  
DOCTOR IN THE HOUSE  
TRAP FOR A LONELY MAN  
OTHELLO

1965  
ALI BABA AND THE FORTY THIEVES  
BELLE or the Ballad of Dr. Crippen (Repeat)  
RATTLE OF A SIMPLE MAN  
MERRIE ENGLAND  
ALICE IN WONDERLAND  
WOMAN IN A DRESSING GOWN  
GOODNIGHT MRS. PUFFIN  
STOP THE WORLD - I WANT TO GET OFF  
THE CAINE MUTINY COURT MARTIAL  
ODD MAN IN  
SEPARATE TABLES  
ALFIE  
CANDIDA  
SHOCK TACTICS

1966  
JACK AND THE BEANSTALK  
DOCTOR AT SEA  
IOLANTHE  
ALICE THROUGH THE LOOKING GLASS  
BRUSH WITH A BODY  
THE HEIRESS  
BREAKING POINT  
OLD TIME MUSIC HALL  
OH WHAT A LOVELY WAR  
THE SUBTOPIANS  
AND SO TO BED  
THE DUMB WAITER and THE PUBLIC EYE  
EVERYTHING IN THE GARDEN  
"FAREWELL, FAREWELL, EUGENE"  
ALADDIN

1967  
WUTHERING HEIGHTS  
TOAD OF TOAD HALL  
THE SORCERER  
WE MUST KILL TONI  
A MAN FOR ALL SEASONS  
MARY, MARY  
CHARLEY'S AUNT  
ONE FOR THE POT  
SUBWAY IN THE SKY  
BUSYBODY  
THE BARRATTS OF WIMPOLE STREET  
OUT OF THE CROCODILE  
NIGHT OF THE IGUANA  
CINDERELLA

1968  
TOM JONES  
SAY WHO YOU ARE  
THE PRISONER  
OLIVER!  
THE MERRY WIDOW  
THE KILLING OF SISTER GEORGE  
OLD TIME MUSIC HALL (300th Production)  
CHASE ME COMRADE  
THE ANNIVERSARY  
LORD ARTHUR SAVILE'S CRIME  
THE CREEPER  
BAREFOOT IN THE PARK  
THE CRUCIBLE

1969  
DICK WHITTINGTON  
BOEING - BOEING  
HOSTILE WITNESS  
RUMPELSTILTSKIN  
PRIVATE LIVES  
DIE FLEDERMAUS  
A SEVERED HEAD  
LOVE FOR LOVE  
BIG BAD MOUSE  
RING OF JACKALS  
THE ODD COUPLE  
THE GHOST TRAIN  
TOUCH IT LIGHT  
HOME AND BEAUTY

1970  
BABES IN THE WOOD  
RELATIVELY SPEAKING  
THE INNOCENTS  
TOAD OF TOAD HALL  
THE PIRATES OF PENZANCE  
SPRING AND PORT WINE  
LUCIA DI LAMMERMOOR  
WAIT, UNTIL DARK  
THE MURDER OF MARIA MARTEN  
or THE RED BARN  
A FUNNY THING HAPPENED ON  
THE WAY TO THE FORUM  
(Playhouse 21st Anniversary Production)  
LET SLEEPING WIVES LIE  
NIGHT MUST FALL  
THE FLIP SIDE  
ALFIE  
THE PRIME OF MISS JEAN BRODIE

1971  
JACK AND THE BEANSTALK  
LOCK UP YOUR DAUGHTERS  
BLITHE SPIRIT  
FALSTAFF  
THE WIZARD OF OZ  
THE YEOMAN OF THE GUARD  
THE ADMIRABLE CRICHTON  
THE OWL AND THE PUSSYCAT  
OLD TIME MUSIC HALL  
THE SOUND OF MUSIC  
HAMP  
COME AS YOU ARE  
DEAD ON NINE  
THE ENQUIRY  
THE LION IN WINTER

1972  
ALADDIN  
NOT NOW DARLING  
DARK LUCY  
THE GONDOLIERS  
TREASURE ISLAND  
HALFWAY UP THE TREE  
REBECCA  
THE MAN MOST LIKELY TO ...  
OLD TIME MUSIC HALL  
DUET FOR TWO HANDS  
ALL IN GOOD TIME

NOVEMBER 1972 to DECEMBER 1973  
Theatre closed for alterations  
and modernisation



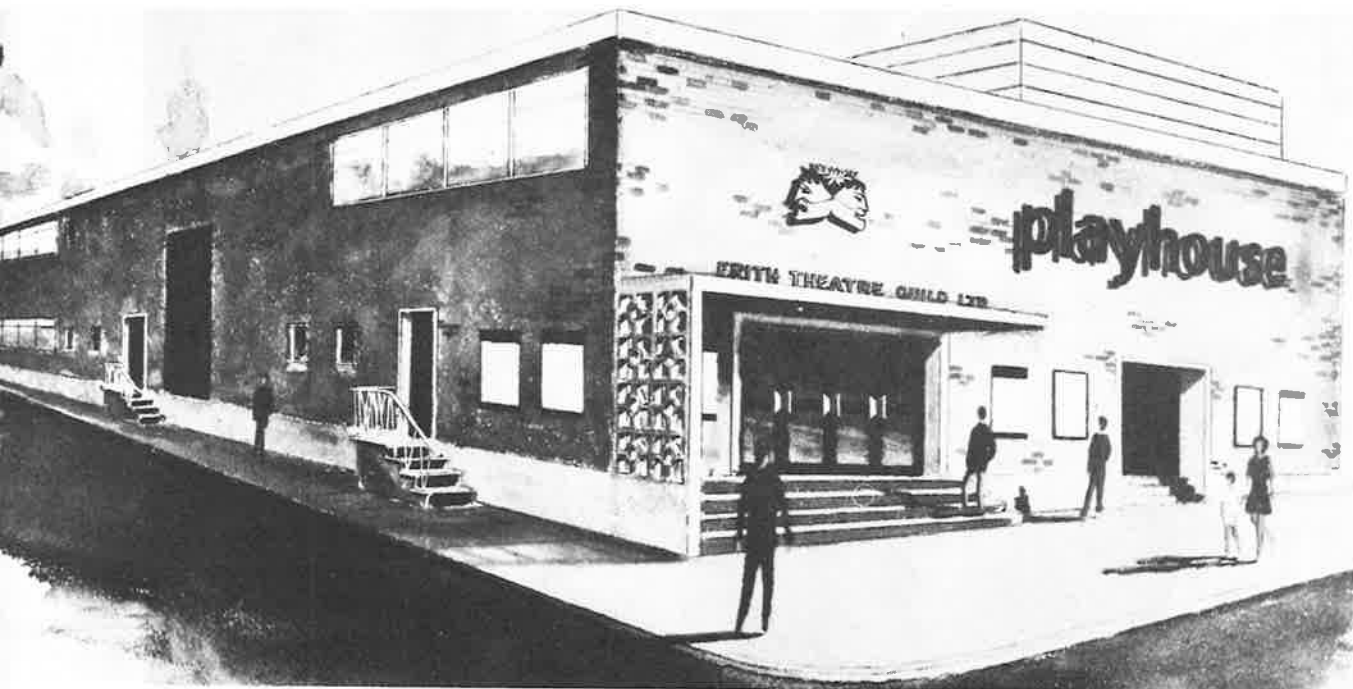


361 shows later times changed again.

1972 and we'd just got a new 21-year lease, but the theatre needed a face-lift. Erith was changing, old was giving way to new and so it had to be with the Playhouse. We'd seen the need some years before and had started planning. Someone — a member of the Guild — handy with paper and pencil had made a sketch. It was a second beginning and a new dream — a dream overshadowed by the almost unbelievable cost.

"That subject to the approval of the Minister of Housing and Local Government, the Erith Theatre Guild be granted a 21 years lease of the Playhouse and ancillary buildings."

*Extract from Town Clerk's letter of 3rd December, 1969.*



*"Someone handy with a pencil made a sketch . . . " (Pettyfer)*

Imagine pound notes in a line from Erith to Thingummy. There would be £75,000, the cost of a year's building and renovating.

We scrimped and saved, scrounged and sold jumble, percolated and poured coffee, walked for sponsors, we stitched and sewed, we did anything we could to raise money, and still entertained our audiences.

Eleven thousand pounds took seven years, a lot of hard work and many, many generous friends and strangers. And, of course, there was some begging and borrowing. The Greater London Borough of Bexley generously gave a direct grant of £11,000 to match our savings and an interest free loan of £16,000 which was subsequently extended to £40,000.



THIS LEASE made the 18<sup>th</sup> day of JULY  
One thousand nine hundred and seventy-two BETWEEN THE  
MAYOR ALDERMEN AND BURGESSES OF THE LONDON BOROUGH OF BEXLEY  
(hereinafter called "the Corporation" which expression shall  
where the context so admits include the person or persons for  
the time being entitled to the reversion immediately expectant  
on the determination of the term hereby created) of the one  
part and ERITH THEATRE GUILD LIMITED whose registered office is  
situate at 38-40 Erith High Street Erith in the London Borough  
of Bexley aforesaid (hereinafter called "the Lessees" which  
expression shall where the context so admits include their  
successors in title) of the other part

*Extract from lease.*





L O N D O N   B O R O U G H   O F   B E X L E Y

B. A. WILLIAMS, F.I.M.T.A., F.C.A., A.R.V.A., Borough Treasurer

Council Offices, Bexleyheath, Kent.      Tel. 01-303 7777

Your Ref.	My Ref.	Tel. Ext. No.	Date
	4/Z/E7	206	5 February 1973

Dear Sir,

Guild Playhouse, Erith High Street

With reference to your letter of 18 January addressed to the Chief Executive and Town Clerk, I propose the following arrangements.

1. The Council will meet half of the payments made by the Erith Theatre Guild on its rebuilding programme until the Council's payments, which will be by way of grant, amount to £11,000. - This arrangement is already in operation.
2. Once the Guild's payments under the contract exceed £22,000, the Council will meet the whole of the payments made by the Guild on its rebuilding programme until the Council's additional payments, which will be by way of interest free loan, amount to £40,000.
3. Payments to the Guild in respect of either grant or loan will be made on production of copies of receipted accounts (or similar evidence) or of accounts due for payment and will normally be for sums of not less than £2,500 on each occasion.
4. The loan would be repaid by a first instalment of £1,300 on 31 December 1974, and by a further 18 instalments of £2,150 on 31 December of each year thereafter, the final payment being made on 31 December 1992. There would be nothing to prevent the Guild making premature repayments at any time if they so wished.

Will you please confirm that you accept the above arrangements, or let me know that you would prefer a meeting to discuss any problems.

I enclose an extra copy of this letter which you may wish to pass to your Treasurer.

Yours faithfully,

Principal Assistant Borough Treasurer

H. F. Bull, Esq.,  
Chairman,  
Erith Theatre Guild Ltd,  
29 Orchard Close,  
Bexleyheath, DA7 4RP.

Yes, we still need more money. Gifts and hard work will provide it and Green Shield Stamps, saved book-by-book, will in time help re-seat the auditorium.

BILLS OF QUANTITIES

for

PROPOSED ALTERATIONS AND REBUILDING OF  
PLAYHOUSE THEATRE

at

HIGH STREET, ERITH, KENT

for

ERITH THEATRE GUILD LTD.

JUNE, 1972

JENNINGS & BARRETT, Chartered Surveyors,  
2, Cross Street, Erith, Kent.

JEFFREY HOWARD Esq., A.R.I.B.A., Consultant Architect,  
28, Berkeley Square, London, W.1.

HEARN & DOLLAR, Chartered Quantity Surveyors,  
116, Gloucester Place, London, W1H 3DB

JOHN F. FARQUHARSON & PARTNERS, Consulting Engineers,  
34, Queen Anne Street, London, W1M 0HA.

That leaves just the £40,000 loan to pay back!

**In the years since the Guild was formed just three men have been at the helm. Men who have been prepared to give their time, energy and devotion to the Theatre's cause.**



*The Chairmen: George Low and Harold Bull with a portrait of the late Harry Clayton.*

**The first was the late Harry Clayton one of the original dreamers. George Low served the Guild from 1951 to 1965. Harold Bull the present incumbent was first elected in 1965.**

**"...to our actors and all who will contribute to our productions: may you gain from every show the satisfaction that comes from a job well done."**

**Harry Clayton – Founder Chairman 1943–51**

**"Whatever the future may be, we are immensely proud of what has been done to date: the conversion of an old building into a theatre, the work of so many people who have been dedicated to the theatre and the reputation that we have gained among similar organisations – you can rest assured that it will not be our fault if the theatre in Erith dies."**

**George Low – Chairman 1951 – 1965**



This booklet is being issued to mark the occasion of the re-opening of our little theatre in Erith which, for the first time in its twenty-four years' existence, has been closed for a period of one year in order to carry out a programme of alterations and modernisation.

As you leaf through its pages you will observe that the main intention is to present a pictorial record encompassing the history, planning and rebuilding project, and various aspects involved in the functioning of a theatre.

Behind the story this book illustrates lies the dedication of officers and members of the Guild, past and present; the generous encouragement of the Council of the London Borough of Bexley; the interest shown by local industries; the tremendous endeavours of our own fund-raising activities; the continued support of our patrons and friends; and the genuine enthusiasm for the project by the Builder and the Chartered Surveyors.

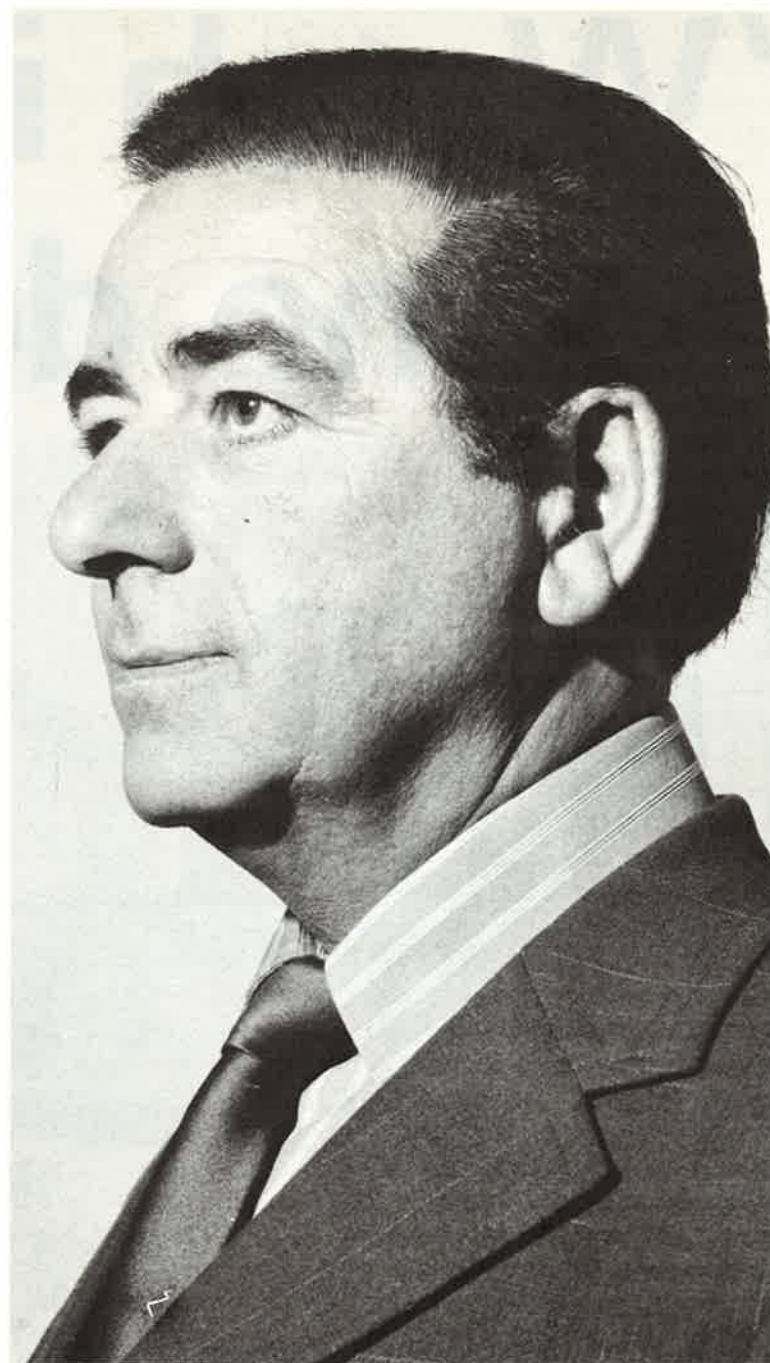
The auditorium and stage of the old buildings have remained intact and this was planned deliberately to retain the intangible theatrical atmosphere that existed since the theatre first opened in 1949.

The doors of the theatre have been re-opened but a great deal still remains to be done by way of improvements in the auditorium, and it is our fervent hope to carry out a programme of work in this area in the not too distant future, always providing the necessary money is raised.

There will be times of struggle, and times of success, as in the past, and the continued existence of our theatre depends upon the loyalty and personal contribution of every member concerned in its creation; whatever the circumstances, we are justly proud of what we have achieved.

The uncertainties of recent years have now been overcome and having established ourselves with a firm base from which to operate once more, we can look forward to the next twenty years with a strengthened confidence in our organisation.

Harold F. Bull, Chairman



# 'Watch it come down'

said the man.



And it did.















# Then it started to go up again ...

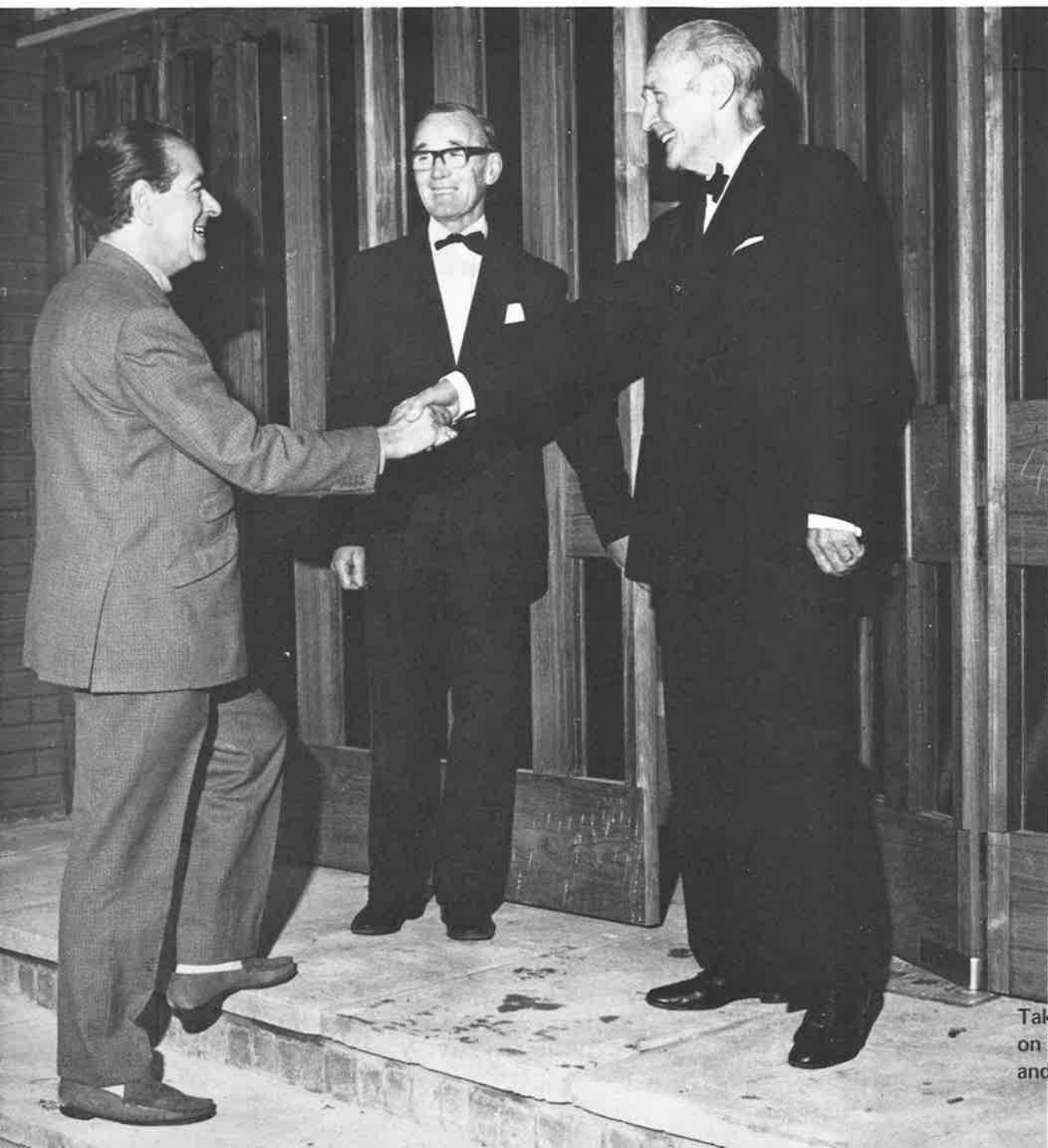


*Tapping the foundation stone into place; E.M. Bennett, M.A., Chief Executive and Town Clerk of the Greater London Borough of Bexley, watched by the builder, E. Blackwell, and, below, with Harold Bull.*



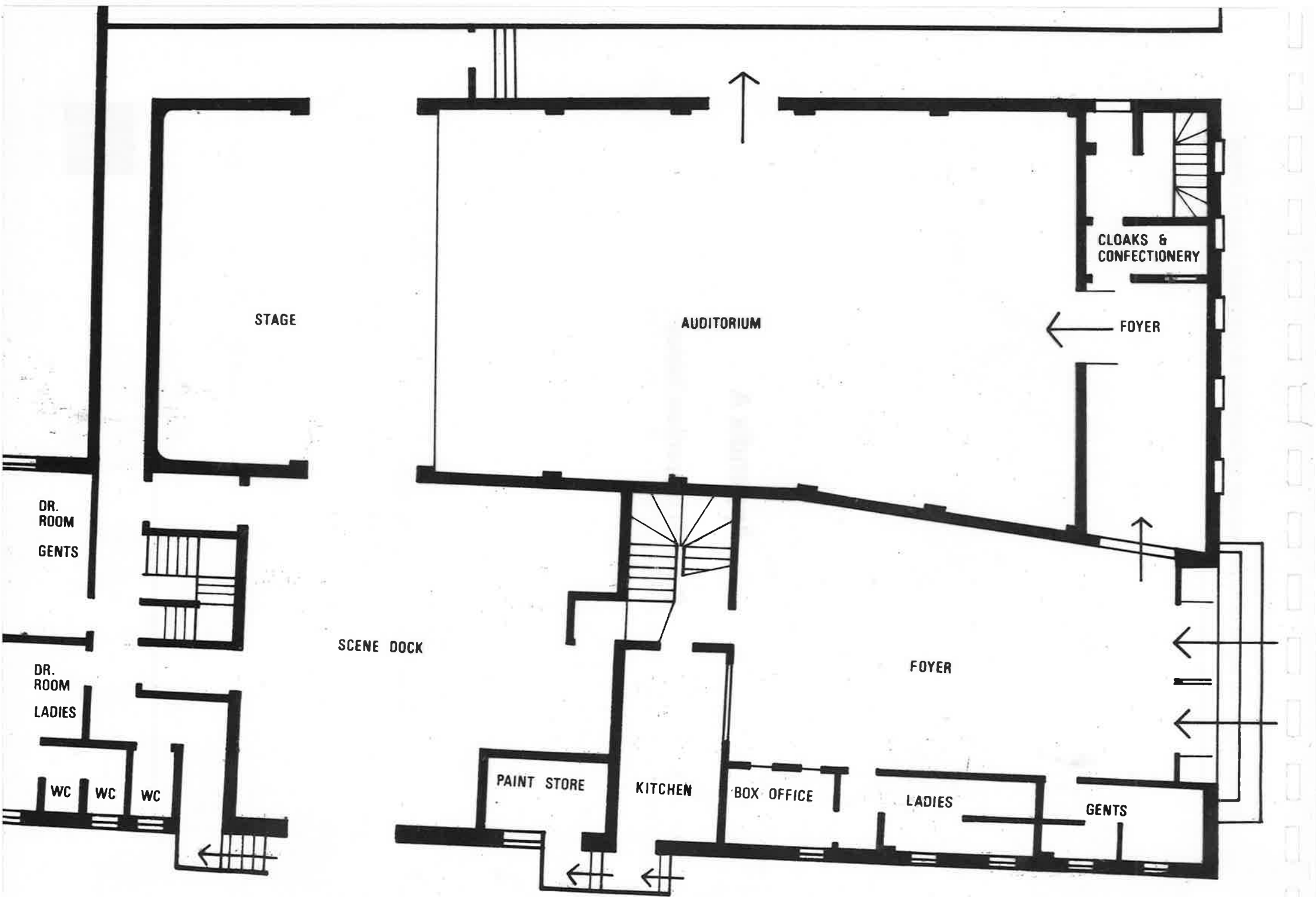
On April 14 th., 1973 the foundation stone was set firmly in place.

Next came months of mounting excitement and planning as the new Playhouse grew.

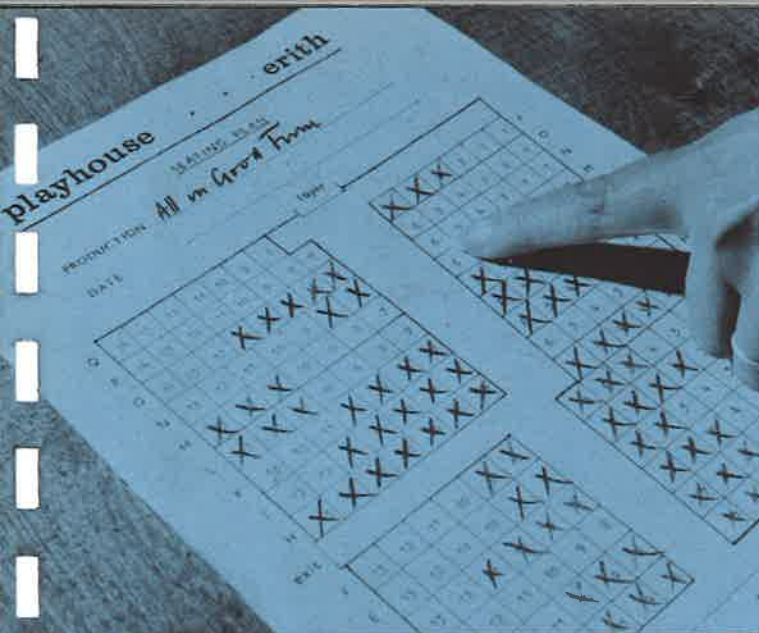


# Come inside

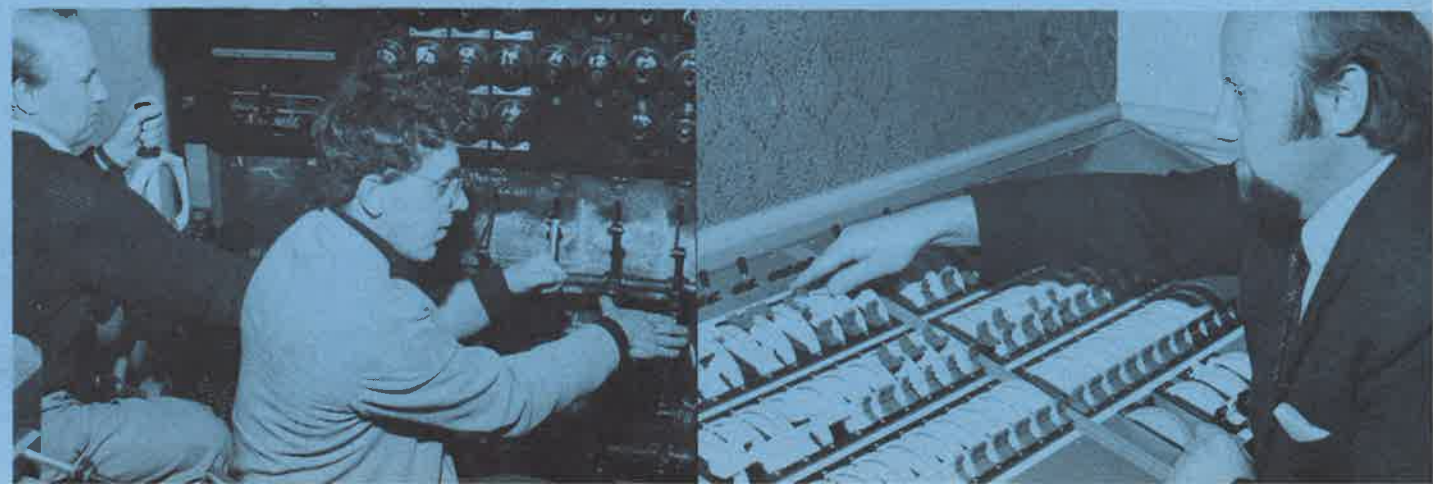
Take a look, not at a play, but at some of the things which go on in a theatre . . . behind the scenes, and behind the romantic and mundane titles you see on your programme.







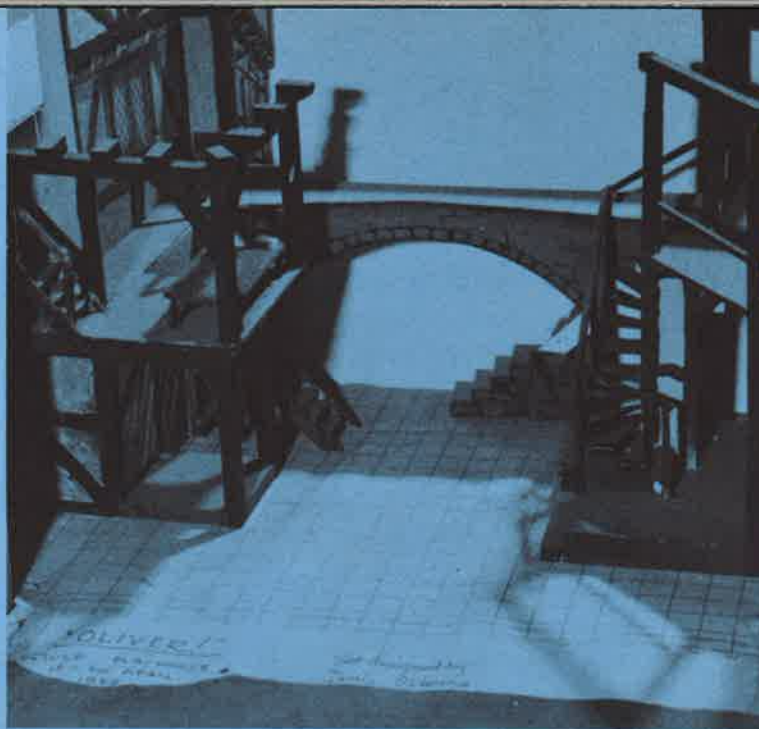
Top: Coffee in the interval.  
 Above: Sound effects.  
 Far left: "Which seat would you like?"  
 Lower left: Stitching time.  
 Left: Stage planning.  
 Below: Lighting old and new.



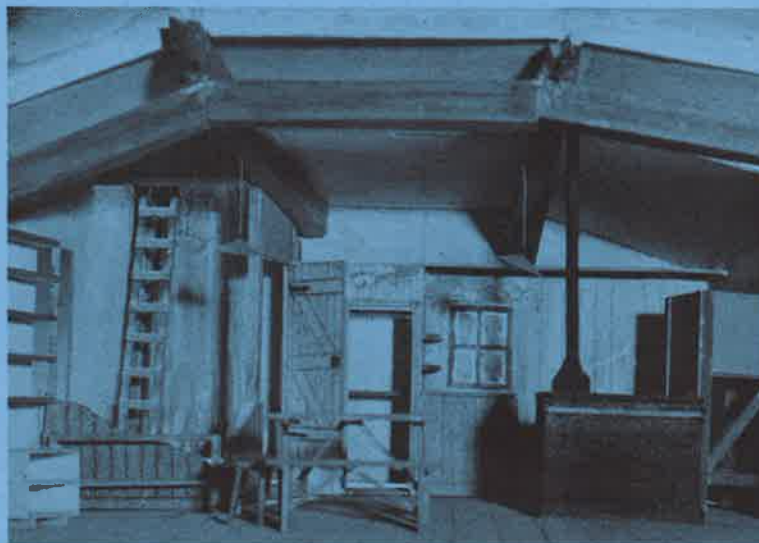




Costume design for Puck — "A Midsummer Night's Dream."



Set model for "Oliver", 1968.



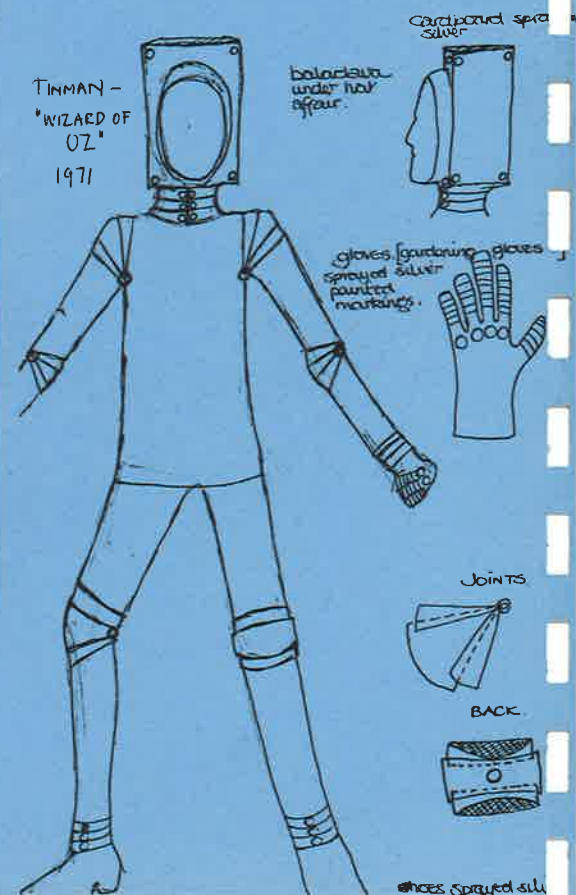
Set model for "Breaking Point", 1966.

There are, of course, scenes behind the scenes — the theatre is administered by a Board of Management, elected annually, who co-ordinate the many talents necessary to our theatre.



A model in the making

The Tinman's costume — "Wizard of Oz", 1971





Set model "A funny thing happened on the way to the Forum", 1970.



Stage set for "The Woodcarver", 1962.



Stage set for "They Walk Alone", 1959.

"The smell of the greasepaint . . ."



Fagin from "Oliver", 1968.



Granny in "Billy Liar", 1962.



"Charley's Aunt", 1967.



"The Hostage", 1962.





*Cement mixing — 1948.*



*Lady with wheelbarrow — 1948.*



*Hughie Greene at the theatre — 1958.*



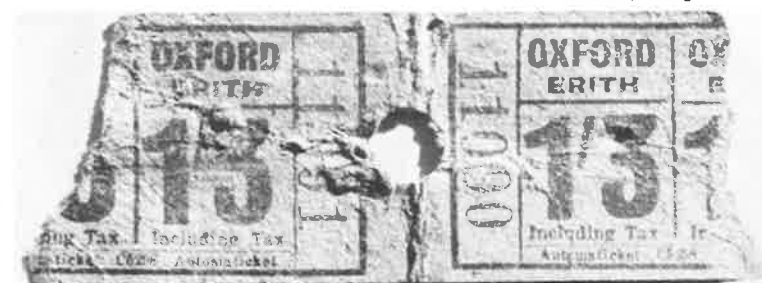
*Wolf Mankowitz at the theatre — 1960.*



*Harry Clayton shovelling — 1948.*



*The theatre opening — 1949.*



*Oxford Cinema ticket found under floor — 1973.*



*Father Christmas with theatre 'pirates'.*

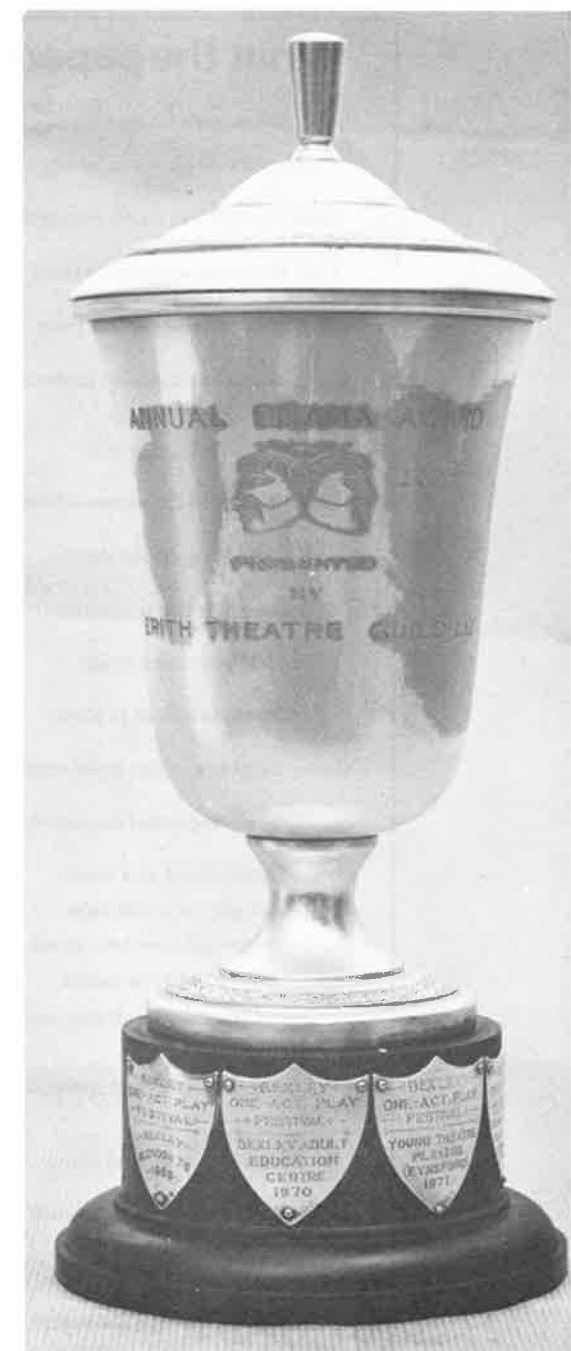
# MILESTONES



*Playhouse Chairman, the Mayor of Bexley and the Borough's  
Mace-Bearer walking for the theatre at Brands Hatch — 1973.*



*Barrel organ collection.*



## What the papers said...

Erith Observer & Kentish Times (K.T.)  
Kentish Independent (K.I.)

Seagulls at Erith score a bullseye	<i>K.I. 1956 – Seagulls over Sorrento</i>
Over the Hills was worth waiting for	<i>K.T. 1958 – Over the Hills and Far Away</i>
Erith Playhouse win Kent Drama Cup	<i>K.I. 1961 – A Stranger in the Tea</i>
The Guild carve a masterpiece	<i>K.I. 1962 – The Woodcarver</i>
Billy Liar was a near perfect production	<i>K.T. 1962 – Billy Liar</i>
What a recipe!	<i>K.I. 1963 – Salad Days</i>
So terrifyingly real	<i>K.I. 1964 – Chips with Everything</i>
Justice is done to the genius of Ustinov	<i>K.T. 1964 – Photo Finish</i>
Fascinating slice of theatre	<i>K.I. 1964 – Photo Finish</i>
A rattling fine production	<i>K.I. 1965 – Rattle of a Simple Man</i>
It went like a bomb	<i>K.I. 1965 – Stop the World I Want to Get Off</i>
Grandstand finish to season	<i>K.T. 1965 – Stop the World I Want to Get Off</i>
Mutiny packs drama that is unforgettable	<i>K.T. 1965 – Caine Mutiny Court Martial</i>
They even applauded the scenery	<i>K.T. 1967 – Charley's Aunt</i>
Theatre Guild on a winner	<i>K.T. 1968 – Tom Jones</i>
Hot play on a cold night	<i>K.I. 1968 – Tom Jones</i>
Dickens would have been proud	<i>K.I. 1968 – Oliver</i>
A show not to be missed	<i>K.T. 1968 – Oliver</i>
Forum was laughter all they way	<i>K.T. 1970 – A funny thing happened on the way to the Forum</i>
Alive with laughter and applause	<i>K.I. 1970 – A funny thing happened on the way to the Forum</i>
Brodie is a triumph all round	<i>K.T. 1970 – The Prime of Miss Jean Brodie</i>
Guild's Lion rich and compelling	<i>K.T. 1971 – The Lion in Winter</i>
Guild's big musical was a smash hit	<i>K.T. 1971 – The Sound of Music</i>
Alive! (with the sound of music)	<i>K.I. 1971 – The Sound of Music</i>



Erith High Street of 70 years ago was a gathering place — it still is.

**The theatre in Erith is alive and well. It consists of ideas and people as well as bricks and mortar. Because of people it lives, because of ideas it evolves.**

Occasionally our influence is felt elsewhere, names on television, cinema and West End playbill often have a familiar ring.

Nearer home our presence is felt and also acknowledged in public. To some we are a local amenity or a cultural centre, but to most people we are a theatre.

**For your entertainment.**



# ERITH THEATRE GUILD LTD.

**President:** The Mayor of the Greater London  
Borough of Bexley

**Vice Presidents:** Mrs D. Clayton  
Mrs S. Fox  
Mrs M. Roberts  
Dame Sybil Thorndike, D.B.E.  
H. Barden  
K. Firmin  
Sir Arnold Lindley  
J. G. Low  
Wolf Mankowitz  
L. J. B. Wager  
Jack Warner

## Board of Management

**Chairman:** H. F. Bull  
**Vice Chairman:** P. Watson (Miss)  
**Treasurer:** A. J. Baird  
**Secretary :** E. D. Chance (Mrs)

**Members:** E. Crichton  
S. Fryatt (Mrs)  
E. Hullett (Mrs)  
J. Larking  
H. Randall  
B. Sackman

**Co-opted:** B. Bailey (Mrs)  
W. Cornforth

## LIFE MEMBERS

M. Auvray

B. Bailey (Mrs)  
C. Bailey  
D. Bailey  
D. Bailey (Mrs)  
K. Bailey (Miss)  
A. Baird  
M. Baird (Mrs)  
H. Ball  
J. Bennett (Mrs)  
P. Bennett  
J.A.S. Biggs  
J. Biggs (Mrs)  
E.M. Billings (Mrs)  
R. Billings  
J.E. Blackwood (Miss)  
D. Bloom (Mrs)  
A. Bowman  
A. Buckley (Mrs)  
H. Buckley  
H.F. Bull

D. Cash  
E. Chance (Mrs)  
A. Christianson (Mrs)  
K. Clark (Mrs)  
H. Clarke

J.W. Clarke  
D. Clayton (Mrs)  
K. Clemas (Mrs)  
J. Cobb (Mrs)  
K. Cornforth (Mrs)  
P. Cornforth (Miss)  
W. Cornforth  
E. Cornish  
L. Cox  
E. Crichton

A. Daley (Mrs)  
C. Daley  
M.E. Davis  
J. Dodds (Mrs)  
N. Dogliani  
F. Dunphy (Miss)  
H. Dunphy  
M. Dunphy (Mrs)

A.W. Farrell  
S. Foster (Miss)  
A. Friend  
M. Fryatt  
S. Fryatt (Mrs)

D. Gee  
R.L. Grainger (Mrs)  
A. Green  
C. Green (Miss)

B. Gregory  
L. Grizzell (Miss)

A.W. Harris  
E.G. Harris  
F. Hate  
J. Hawtin (Miss)  
A.S. Higgs  
I.M. Higgs (Mrs)  
J. Hollingsworth  
E. Hollingsworth (Miss)  
V. Hollingsworth (Mrs)  
A.K. Howe (Mrs)  
L. Hughes (Mrs)  
M. Hughes  
L. Huntley

H. Ingram  
Inner Wheel President

L.A.W. Jennings  
D.A. Johnson

W.T. Knowles

A. Larking (Mrs)  
J. Larking  
M. Laurence (Miss)  
G. Lawrence  
P. Leggett

C. Lincoln  
A. Lindley (Sir)  
R. Lindley  
R. Lindley (Mrs)  
G. Low  
M. Low (Mrs)  
M. Low (Miss)  
S. Low

G. McCullough (Mrs)  
S. McCullough  
T.H. McCullough (Miss)  
A. McLean (Mrs)  
D. McLean  
A. Marchant (Mrs)  
J. Marchant  
G. Markham (Miss)  
C. Martin (Mrs)  
F.E. Martindell  
D.I. Masters (Mrs)  
A.J. Messum  
E.M. Messum (Mrs)  
D. Miller  
J. Minnett  
O. Minnett (Mrs)  
V. Montague (Mrs)  
W.H. Montague  
W. Morton (Miss)

D. Oliver

D. Oliver (Mrs)  
S. Palmer (Mrs)  
W. Payne (Mrs)  
G. Penny  
M. Pritchard (Miss)

M. Rand  
H. Randall  
B. Reed (Mrs)  
N. Reed  
L. Reeves  
J. Robarts  
N.A. Robertson  
B. Rodmell (Mrs)  
C. Rodmell  
K. Rodmell  
M. Rostron

B. Sackman  
D. Sackman (Mrs)  
W. Sadler  
J. Saveall  
D. Shotton (Mrs)  
P. Shotton  
R.H. Starkey  
M.M. Stephens (Mrs)

A.R. Taylor

U.L. Taylor (Mrs)  
M. Tripp  
E.J. Tytler

J.B. Wadlow (Mrs)  
W. Wadlow  
S. Walworth  
S. Warman  
P. Watson (Miss)  
J. Wellbeloved M.P.  
J. Wharton  
B. Willard (Miss)  
P. Wood (Miss)

B. Youngman

#### Acknowledgements

##### Builder:

A.E. Blackwell Ltd.

##### Chartered Surveyors:

Jennings and Barrett

##### Photographs and other material used in this booklet:

W. Brookes  
R. Harding  
A.W.R. Harris  
Kentish Independent  
Kentish Times  
Pace  
Ron Weston  
and the members and friends  
of Erith Theatre Guild Ltd.

Booklet compiled and designed by  
Topmark Media and printed by E.S.D. Ltd.,  
55 Standard Road, Park Royal, London, NW10 6JG

**Erith Theatre Guild Ltd.,  
Erith High Street,  
ERITH Kent.**

Telephone: 34084



